

WELCOME IN OUR HOUSE SAINT GERVAIS



June 2019

INDEX

WELCOME.....	4
inventory upon arrival and departure.....	4
Shops nearby.....	5
Bakery Douss Epi.....	5
Café / magazines.....	5
Delicatessen BOUTOLLEAU	5
Pharmacy	5
Bank	5
Shops / supermarket / petrol stations	5
In the house.....	7
GROUND FLOOR.....	7
Main entrance	7
TV room	8
Dining room.....	8
Living room	8
Kitchen	8
Scullery.....	9
1st Floor	10
WIFI.....	11
Television.....	11
The swimming pool	13
Enjoying the garden.....	15
Sheepfold	15
Garden tables	15
Barbecue	16
More activities	17
Public media library.....	17
Tennis	17
Horse riding : Haras de Presnes	17
Bike, canoe or Kayak hikes.....	18
Karting.....	18
Sailing.....	18
yachting.....	19
Shell hunting.....	19
Time to swim in the ocean.....	21
Our favorite: la Parée Grollier	21

La Barbatre on Noirmoutier island..... 2I
The nearest : Fromentine..... 2I
North of Bourgneuf bay..... 2I

WELCOME

Cécile, François and their 5 children are happy to welcome you to their holiday home in Saint Gervais. We hope that, like us, you will appreciate the charm of the house, the calm of its park and especially, the proximity of the seaside.

You who stay here a few days or a week, this guide will allow you to discover the house and its environment.

Saint Gervais is located in the country of the Vendée marshes.

- North of Saint-Gervais, towards Bouin, you will find an oyster farming activity. The port of departure for this activity and the Port du Bec, 10 minutes from the house. If we continue in this direction, we drive along Bourgneuf Bay until Bourgneuf en Retz, Pornic, Saint Nazaire.
- To the south, these are the large sandy beaches, with the Mont Bar, Saint Jean de Mont, Saint Gilles Croix de Vie.
- If you go due west to the coast, do not miss the crossing of the Gois to reach the Baroque Beach in Noirmoutier (20 minutes from the house). Outside these hours, you have to take the bridge

We wish you a pleasant stay.

Inventory upon arrival and departure

In our absence, it is Sandra who will welcome you on site and will make the inventory of entry and exit. Sandra lives in the annex building which is on your right as you enter the property.

During your stay, you can contact her for any questions necessary for the operation of the house, the garden and the pool.

Shops nearby

Bakery Douss Epi

When you leave the house, turn right 200 m. The owner greets you with a large and friendly smile. It opens at 7:00 in the morning. Open every day except Wednesday. That day, the bread is taken at the café de la Grenouille, Place de l'Église.

Tel: +33 (0)2 51 68 81 06

Café / magazines

On the church square, you will find the only bar - tobacco-shop. It also sells bread, cigarettes, postcards and magazines.

Delicatessen BOUTOLLEAU

In front of the church. A reference in the area, the Boutolleau delicatessen. It's simple, everything is excellent in this shop ! we recommand their sausages and the traditonnal « jambon vendéen »

Pharmacy

In front of the church

Bank

- La Poste : en face de la maison, à côté de la mairie
- Crédit Mutuel sur la route de Beauvoir sur Mer, avec un distributeur de billets
- Poste: in front of the house, next to the town hall
- Credit Mutuel bank, on the road to Beauvoir sur Mer, with a 24/24 cash machine

Shops / supermarket / petrol stations

- Intermarché: 4 minutes by car towards Beauvoir sur Mer, on your left when leaving. This is the closest shop to the house. Petrol Station 24/24.
- Fish shop (02 51 68 79 96): in the same premises as Intermarché in Beauvoir sur Mer. Guaranteed coast arrivals and oysters
- Super U: at the exit of Beauvoir-sur-Mer, rue des Sables, 9mn

- Leclerc in Challans, 10 minutes. Convenient because located at the entrance of the city from Saint Gervais. Possibility of Drive.
- Decathlon (sport shop) in Challans

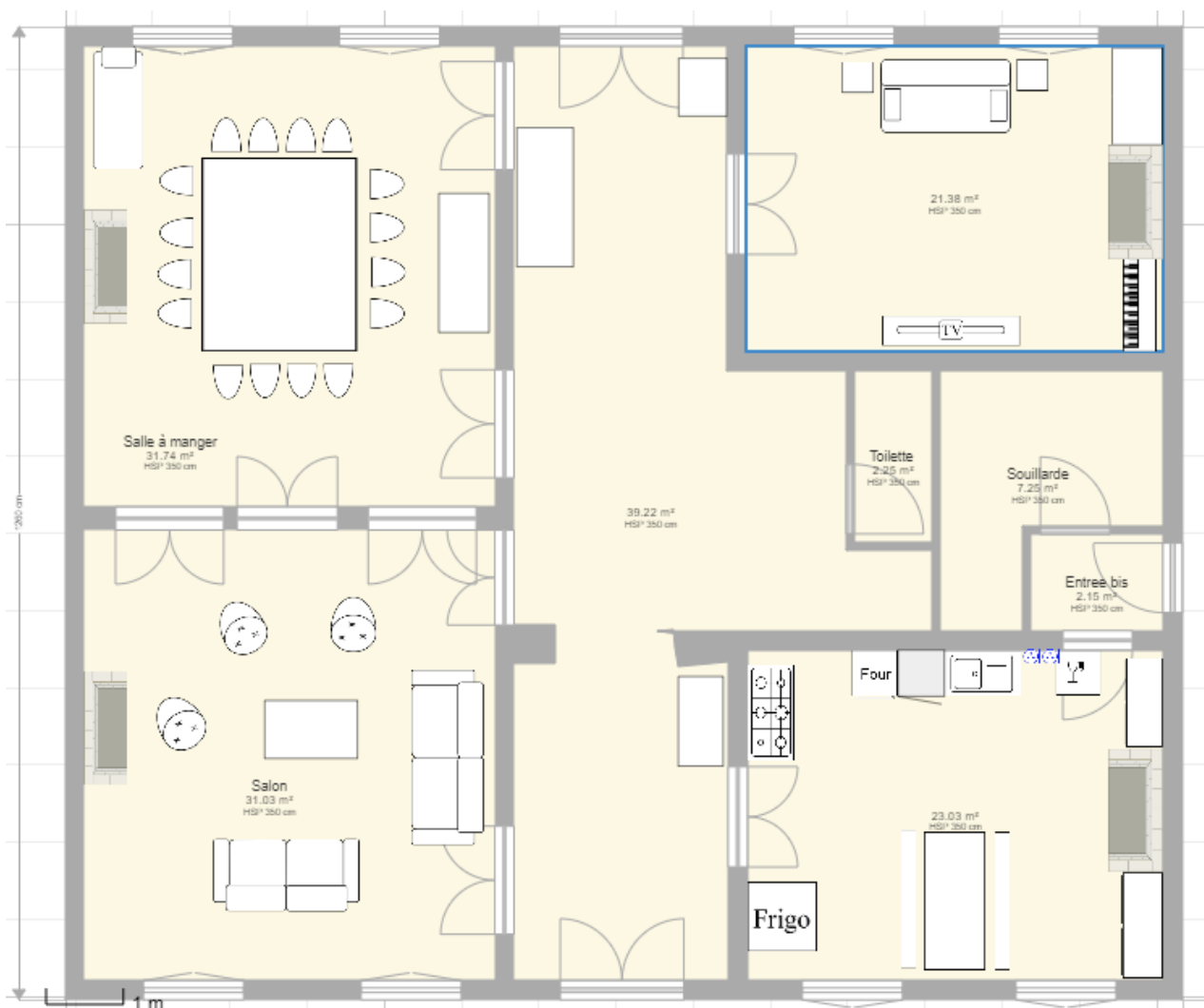
In the house

The gate must always remain closed for security.

Please do not park cars on the grass on the central reservation.

There are tenants in the house on your right in the yard. Thank you for respecting their tranquility.

GROUND FLOOR



Main entrance

The two switches to the right of the entrance door allow :

- Outdoor lighting for the first

- The lighting of the lamp on the furniture for the second.

The general lighting of both ground floor and first floor halls is at the switch at the bottom of the stairs.

The two lamps with the "dogs" lampshade are turned on and off with a switch placed near the lampshade

TV room

You have access to a convertible sofa. The cushions remain to unfold it in bed mode. The duvet and pillows are in the buffet to the left of the fireplace.

The switch on the door is connected to the outlet on the right of the chimney which lights a lamp.

The shutters of this room are closed from the inside.

All chimneys are clogged with bird nests. It is forbidden to make a fire.

Dining room

The configuration of the dining room allows to place 14 people square. Plates and cutlery are in the kitchen

Living room

There are two sofas (3 seats and 2 seats) and 3 club chairs.

In the closet to the left of the dining room door you will find all wine glasses / aperitifs / beers and champagnes. Please make sure to put the glasses back in this cupboard and not in the kitchen.

In the closet on the left of the window you will find:

- Board games –
- Hi-Fi system with CD player. A jack cable allows you to listen to music via a smartphone equipped with a plug. Select the "auxiliary" setting on the amplifier –
- Miscellaneous books

Books and games are kindly available to you. Please respect their use and store them in their full place.

Kitchen

The so called « Godin kitchen piano » is used for gas fires only. The gas bottle is to the right of the piano. It is recommended not to use the piano oven

The BOSCH oven is electric. The operating instructions are located in the arrangement just above the oven.

The cutlery is located in the first drawer at the top. Complementary cutlery are in the drawer of the farmhouse table

The SMEG dishwasher is to be emptied before the inventory of places of exit.

Under the farm table, you will find a ground socket that allows the connection of electrical appliances

Scullery

You will find

- the washing machine,
- the microwave
- the clothes dryer.

In the shelves, you have:

- a raclette machine
- a pancake machine
- various kitchen appliances
- A yellow box contains birthday candles. Thank you for replacing what you use

Warning: The external lighting switch is illuminated when the light is **off**.

1st Floor

The 1st floor switch is located at the top of the stairwell. The landing gives access to the 5 bedrooms. the names of the rooms are those of famous general of the royal army during the war of Vendée in 1793

Two rooms are located at the entrance of the property (La Rochejaquelein and Charrette) and the other 3 (Lescure, Bonchamps and Stofflet) offer views of the pool and the park.



The details of the rooms are as follows :

Nom	lit double	lit simple	nb lits	nb couchages
Lescure	1		1	2
Bonchamps	1		1	2
Stofflet		3	3	3
Charrette	1	1	2	3
La Rochejaquelein	1	1	2	3

- The Charrette, Stofflet and Lescure bedrooms have an ensuite bathroom / shower. The toilets are on the landing
- The Lescure room has a private toilet
- The Bonchamps room uses the bathroom and the toilets of the landing.
- In the Stofflet room, it is possible to bring together two single beds to have a double bed

A few complementary points :

- There is a wardrobe on the landing. Only the right handed side is available. The left handed side est locked for our personnel belongings
- the squeegees placed in the shower cabins are to be used after each shower to prevent the water from stagnating
- You don't have acces to the second floor

WIFI

For a better connexion, we have a 4G box but not with an unlimited data plan! the box should not be used to download movies

When starting the television, you must choose the source "HDMI1" on the remote control that allows you to connect the Chromecast box. The Blue Ray player is on the HDMI2 port

You can connect to the house network called VILLA BONA.

The WIFI access code is bravebutter330.

You have 2 relay stations located on each floor which allows to have the WIFI network throughout the house and garden.

We remotely monitor and control that this connection is not used for the purposes of infringing copyrighted works or related rights (music, film, books, photographs, etc.). If we notice any illegal or abnormal use, we will block the modem remotely without notice.

Television

You have a chromecast terminal that is plugged into the television. You can use your smartphone with Molotov application for example.

The swimming pool

The dimensions of the basin are 11 x 5 m. The small bath is 1.06m and the large bath 2m.

The treatment of the pool is chlorine-free. So there is no smell or red eyes!

Pool cleaning is automatic with the hydraulic robot. Thank you for not disturbing its operation or take it out of the pool.

The water from the pool is heated from June to September at 26 °C (78.8 °F) thanks to a heat pump. In order not to lose heat and for safety, it is recommended to close the pool shutter during the night.

It is strictly forbidden to manipulate the filtration system of the swimming pool.

If you notice any significant soiling or a change in the clarity of the water, please notify us immediately.

To keep the pool warm and ensure safety, please close the shutter as soon as you stop using it.

The pool safety when the flap is unfolded is only ensured if the 6 safety straps are attached. Be careful not to forget to detach them when you want to connect the shutter.



The shutter wraps and unfolds with a remote control that is located in the sheepfold. The sensor is in the left side of the winder. Just press to open the shutter and you have to stay pressed continuously for closing.

When the shutter is rolled up, it is strictly forbidden to climb on it to plunge into the pool as it may break blades.

It is possible to illuminate the pool via the spots in the pool. Simply put the "projecteur" button in the "marche" position in the small electrical cabinet at the water treatment system in the barn



Warning: all the safety devices never replace the active and permanent monitoring of children by an adult

Enjoying the garden

Sheepfold

You will find all the pool games in the barn next to the pool. It is also where you will find:

- Deck chair mats
- Wooden lounge chairs.



Garden tables

You have two round metal tables with 4 chairs each. These tables can be moved according to your needs and desires. Thank you for returning the tables and chairs to the place where you found them before your departure



It is not possible however to move the teak table under the lime tree because of its weight.

Barbecue

The barbecue is charcoal and / or wood that you find in the park. There is a "plancha" plate on the left of the barbecue that can be removed to increase the capacity.



More activities

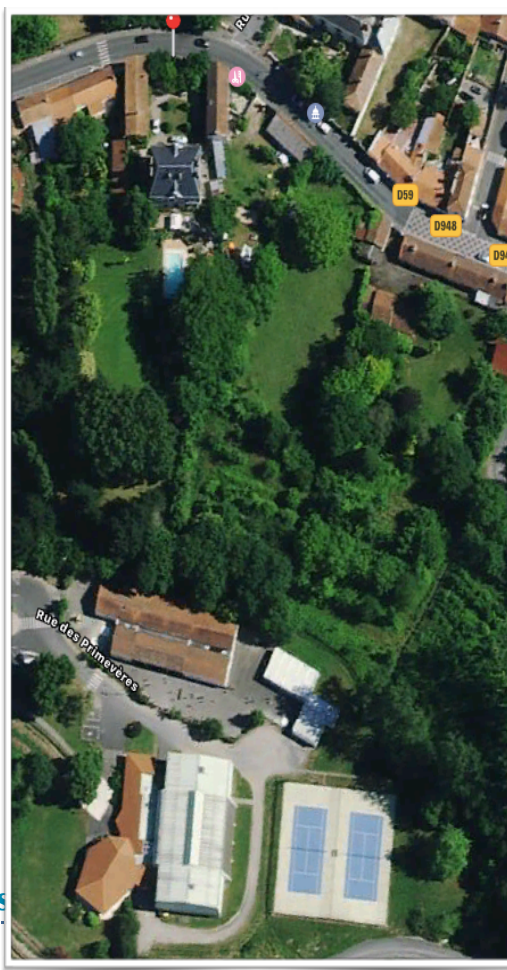
Public media library

On the road to Beauvoir sur Mer, 300m left out of the house. Very nice restoration of the old stables of the city. Media library offering a lot of choice (books, dvd's)



Tennis

The two tennis courts are at the back of the garden. They are free access.



Horse riding : Haras

You want to discover the pony or horse through leisure, development or competition? Aude SCHERER, riding instructor and international competition rider, her husband Rodolphe SCHERER (Olympic champion) and his team welcome you to facilities that allow the discovery and practice of riding by all and safely, with a Adapted cavalry and quality coaching.

The Horse Riding School offers you:

- Baby pony lessons from 4 years old: fun lessons,
- Horse lessons and ponies all levels,
- Leisure: walk marsh, beach, hikes, party of the club, ...,
- Official competitions and training: CCE, CSO, dressage
- School holidays with federal exams,



<http://www.harasdespresnes.fr> or +33 (0)2 51 60 22 14

Bike, canoe or Kayak hikes

The "Route du Sel" company is used to organizing bike, canoe or kayak hikes to discover the Vendée Breton marsh. They are based in Sallertaine, 10 km from St Gervais.

<http://www.laroutedusel.com> ou 0251930340

Karting

In Challans

<http://www.martiniracingkart.com>

02 51 93 33 44

Sailing

Clubs de voile à

Fromentine :

<http://nautismefromentine-vendee.com> ou 06.12.73.95.88

Barbâtre

<http://hissez-haut.fr> ou 02 51 39 80 19

yachting

Fromentine (club de voile) au 06.27.22.16.67

Barbâtre :

<http://www.sel-ton-char.fr> ou 06.71.81.00.05

Shell hunting

Where: The most hearty beach is certainly the Passage du Gois. Clams pick themselves up with a scraper; there are some in the sheepfold. Oysters, for their part, are on the rocks (no jokes!). With a stake and a hammer, you type! We recommend the Port Morin area and especially the la



hush, do not repeat it ...). For two hours of fishing, you have enough oysters and clams for a hearty dinner, accompanied by a Vendée white wine (let's stay true to the region).

Avoid leaving everything outside, because after that, it does not smell good! The seafood is in the fridge!!!!

Beware, there is a regulated size (not that clams can reach 6 meters long, but those too small are not to take! - except if you want to pay a fine.

Beware again : : fishing is not for sissies who cry when they received a drop of water on their skirt mid-thigh, go in shorts or waterproof pants!

Time to swim in the ocean

Our favorite: la Parée Grollier

Located at the Barre-de-Mont, it is a relatively uncrowded dune beach. It is accessed by a sandy path (coordinates 6.8494993, -2.1286329 on the GPS) along 1 km through the forest .. It takes 20 minutes to go, passing through Saint-Urbain. Car parking is 20m from the beach.

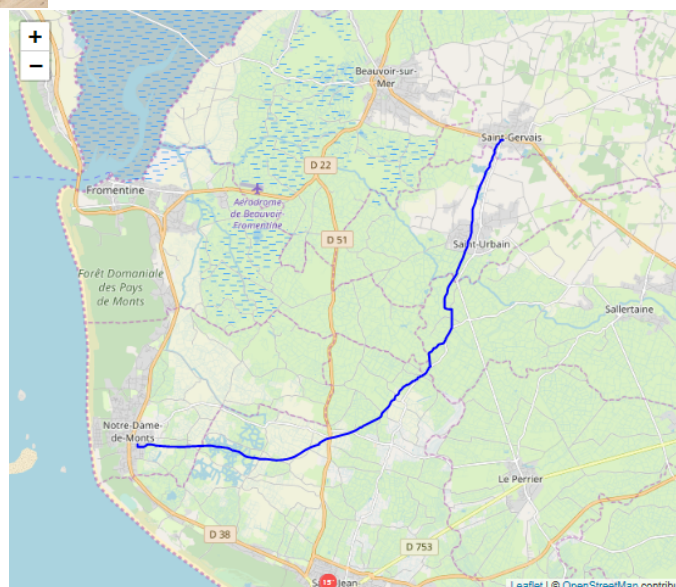


The average temperature last year was :

July 2018 : **19.9°C** (19 à 21°C)

August 2018 : **21.1°C** (19 à 22°C)

For those who like to run, we recommend circuits between seafront and dunes.



La Barbatre on Noirmoutier island

It's a 20 mn journey driving through the Gois road. Beware of the access hours due to the tide.

The nearest : Fromentine

It is close (less than 15 mn away) and offers a view of the Noirmoutier bridge. Possibility of launching a boat on a trailer.

North of Bourgneuf bay

A preference for Pornic and its small beaches carved in the rocks. It takes 30 to 40 minutes to drive.

The water temperature is a bit colder than at the Parée Grollier.

